

# **2016 REDEPLOYMENT EFFORT**

## **Neighborhood Association Meeting**



March 2016

## **PURPOSE:**

### **1. Holistic review of organization:**

- Asset Placement
  - placing needed resources in high volume / high hazard areas
- Resource Utilization
  - ongoing evaluation process to make most efficient decisions possible regarding personnel, stations, and apparatus
- Budget Awareness
  - being good stewards of tax payers' dollars

### **2. While being mindful of Mission Statement:**

***"We will provide an appropriate safe and professional response to fire, medical and environmental emergencies. We are dedicated to minimizing the loss of life and property through fire suppression, rescue, education, code enforcement, investigation and other innovative programs."***

# BY THE NUMBERS 2015

IFD Total Responses – 125,089

Working Structure Fires – 565

## Department Make-up

### 1213 Total Sworn Strength:

955 White Males, 177 Black Males, 15 Hispanic Males, 6 Asian Males, 4 Other  
45 White Females, 9 Black Females, 1 Hispanic Female, 1 Asian Female

### 296 Sworn Personnel on Duty Per Shift

Suppression Work Schedule – 3 Shifts

A – B – C: 24 Hours On 48 Hours Off + Kelly Day

IFD Average Turnout/Response time 4:19

Admin Work Schedule: 8:00 AM to 4:30 PM M-F

### Department Rank

42 Merit Battalion Chiefs

90 Merit Captains

180 Merit Lieutenants

831 Privates

31 Probationary

39 Recruits

### Department Certs

174 Paramedics / EMT

1039 EMT's

62 Active Rescue Divers

566 HazMat Techs

65 Civilian Members

### 44 Fire Stations

Serving 278 Square Miles

88 Pieces of Front Line Apparatus comprised of:

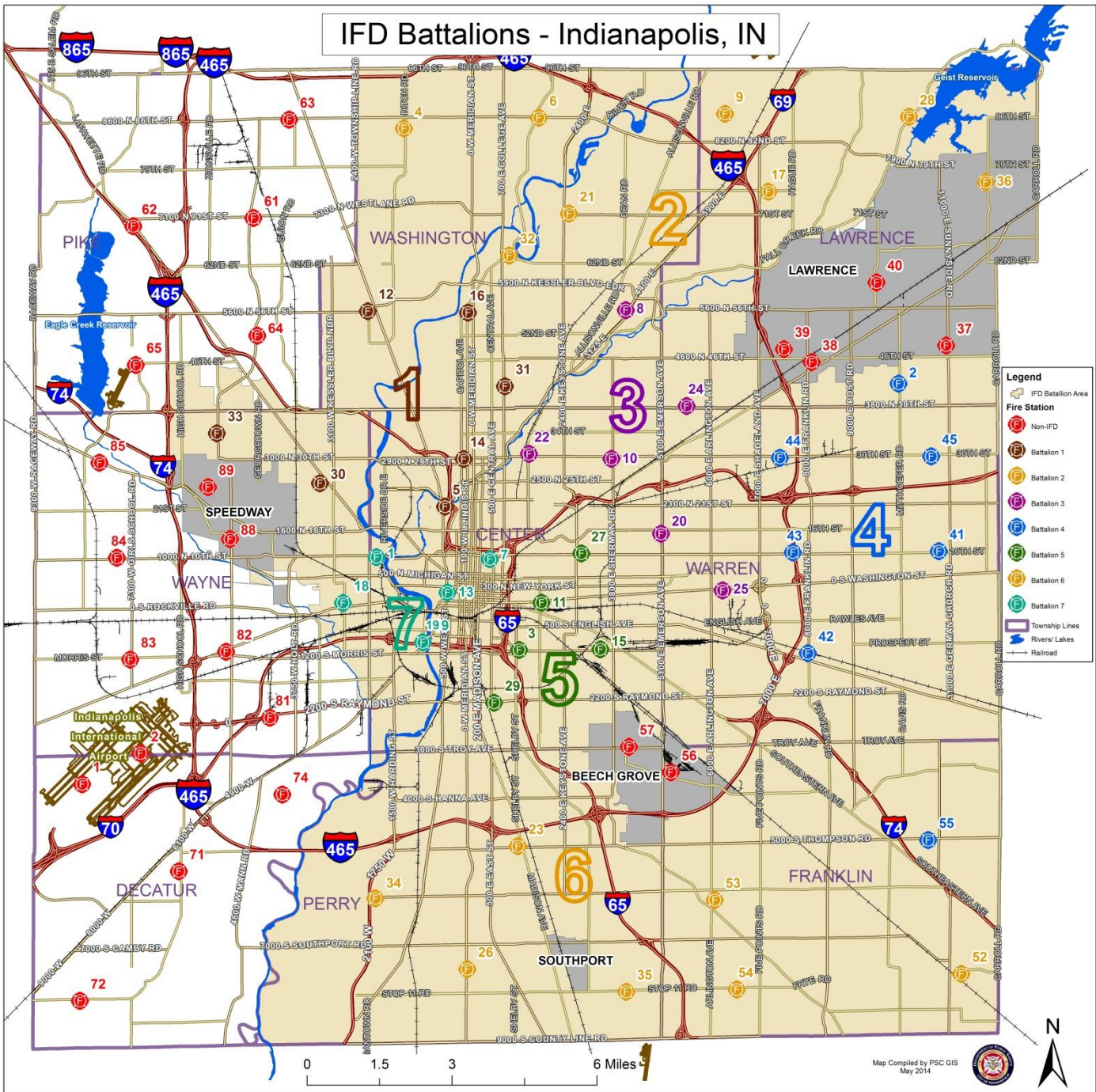
43 Engines, 22 Ladders, 6 Squads, 4 Tankers, 7 Battalion Chief's Buggies,

4 TSU (Tactical Support Units), 3 Safety Officers, 2 EDO's (EMS Duty Officer),

1 Shift Commander, 4 Rehab Units.



# INDIANAPOLIS FIRE DEPARTMENT Protection Area



## **2016 INITIATIVES:**

- 1. HEADQUARTERS**
- 2. BATTALION 3 QUARTERS**
- 3. STATIONS 16 & 32**
- 4. STATIONS 52 & 54**
- 5. REPURPOSE STA. 54 - IFD FITNESS CENTER**

# 1. HEADQUARTERS – 955 Ft. Wayne Avenue

## A. Work site consolidation

- Administration
- Training
- Quartermaster
- Fire & Life Safety

## B. Approximate annual financial savings

- Training - \$ 55k
- Quartermaster - \$15k
- Fire & Life Safety - \$60k
- Total = \$130k

## C. Non budgetary benefits

- All divisions working together in centralized location with ample classroom and conference room space
- Improved communication
- Decreased down time by eliminating travel between work sites

## **2. BATTALION 3 QUARTERS– 2970 N. Sherman Drive**

### **A. Battalion 3 relocation**

- From Station 25
- To Station 10

### **B. Relocation benefit**

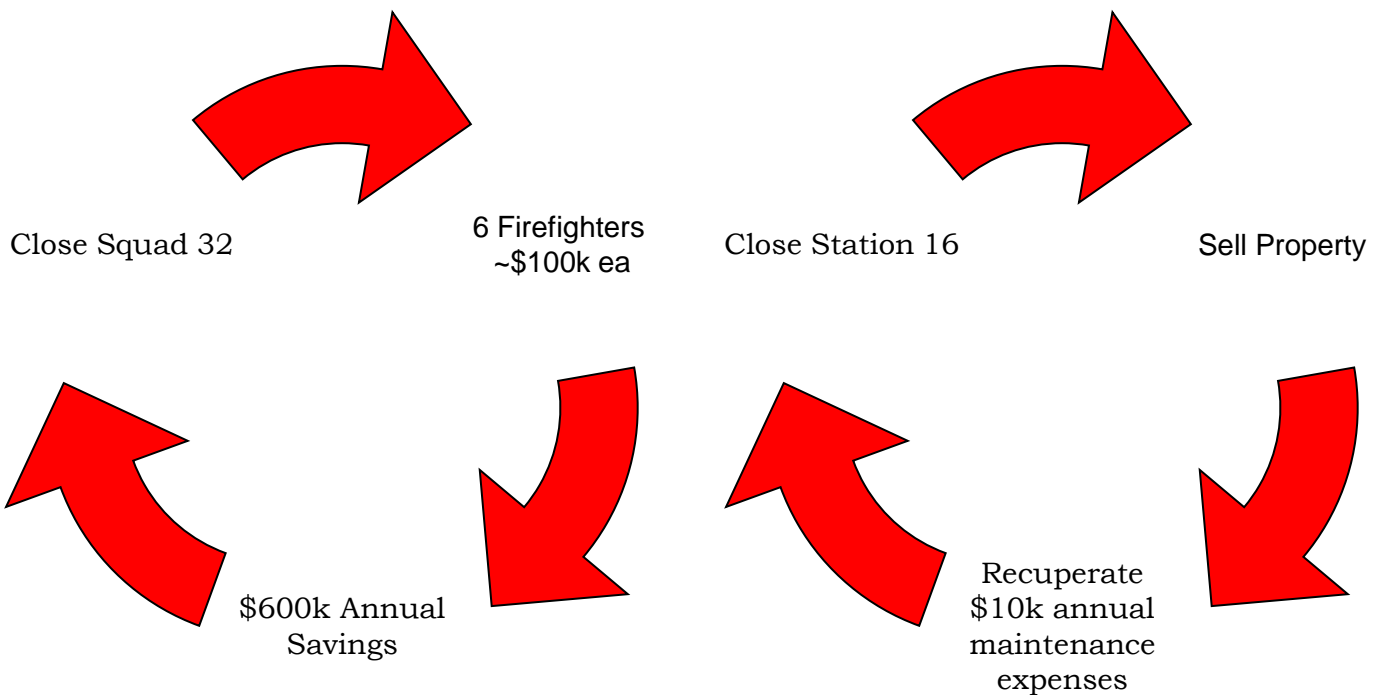
- More centralized location for battalion coverage
- Improved response times

### **C. Community investment**

- Focus area
- Appropriate apparatus placement to serve neighborhood

### 3. STATIONS 16 & 32

- National Fire Protection Association (NFPA) 1710 states the first arriving fire apparatus will arrive on the scene within 4 minutes 90% of the time. The remaining apparatus will arrive on the scene within 8 minutes 90% of the time



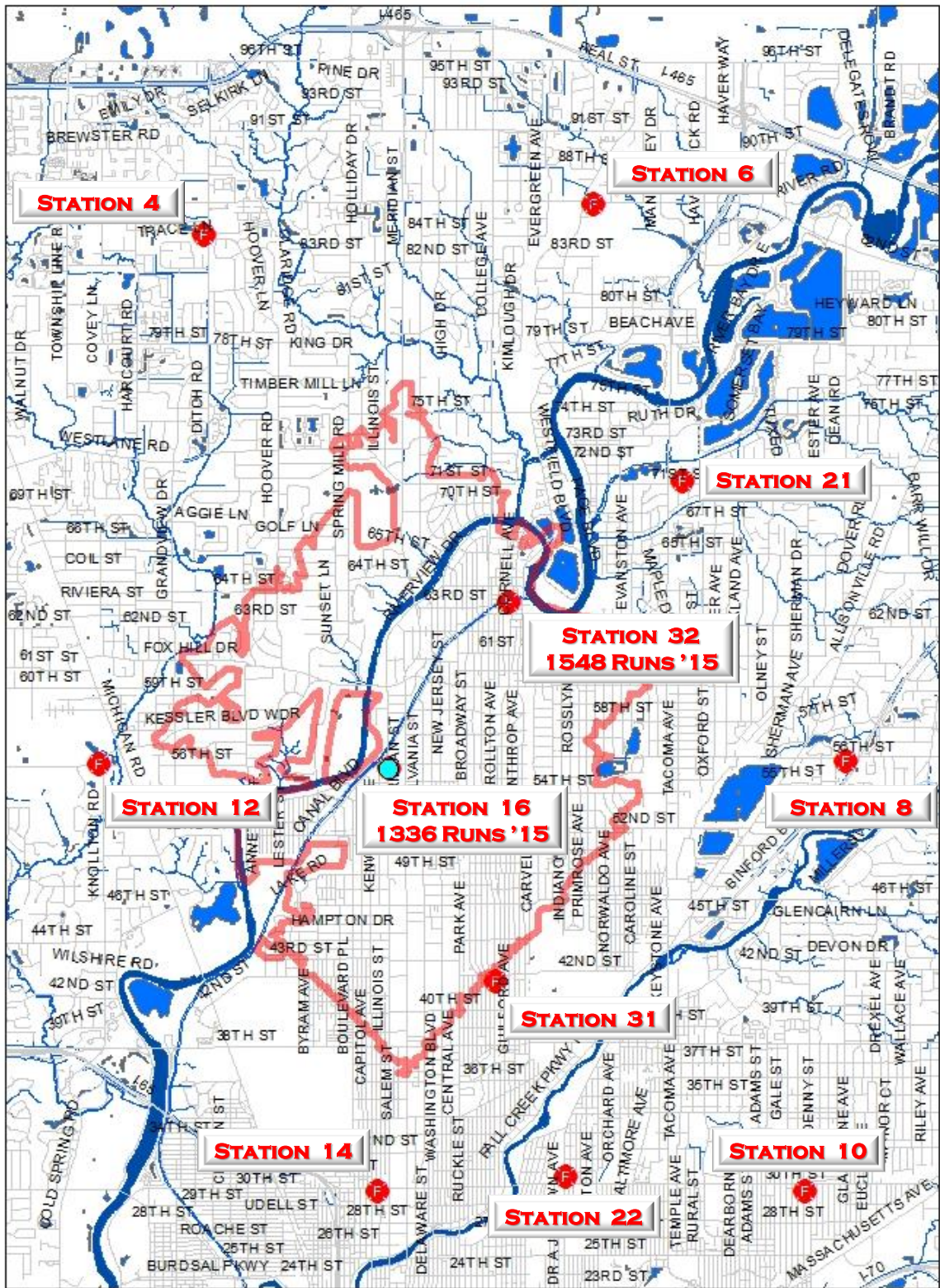


### **3. STATIONS 16 & 32 (Cont.)**

#### **A. Consolidate Stations 16 & 32**

- Remove Squad32 and replace with Engine 32
- Engine 16 reassigned to a station which needs an upgraded engine
- Broad Ripple's community development plan includes an increased # of buildings which means an increased # of hazards for the fire department
- 2<sup>nd</sup> highest destination area in city
- Closed station could be utilized for future neighborhood community center

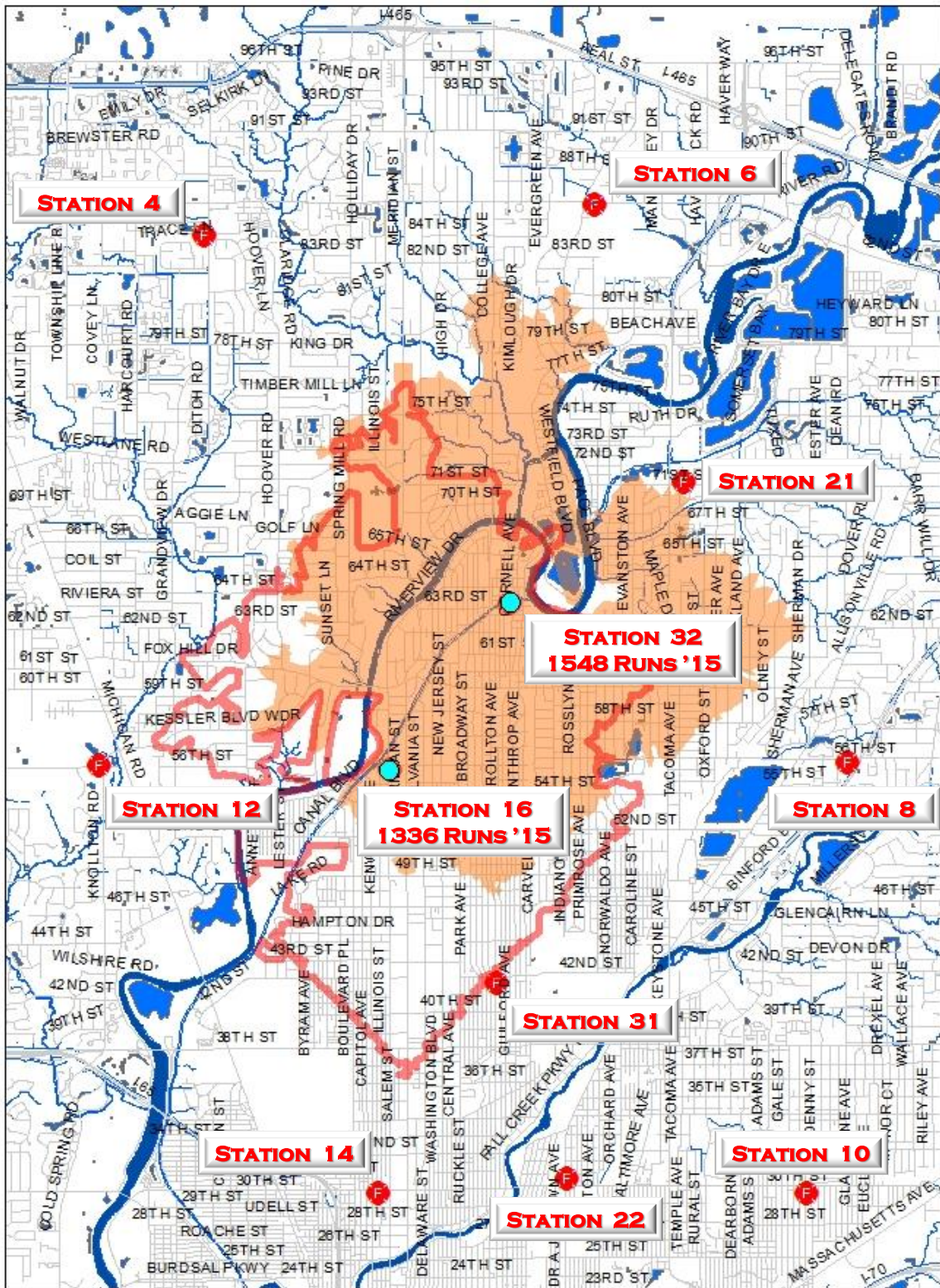
### 3. STATIONS 16 & 32



**Station 16**



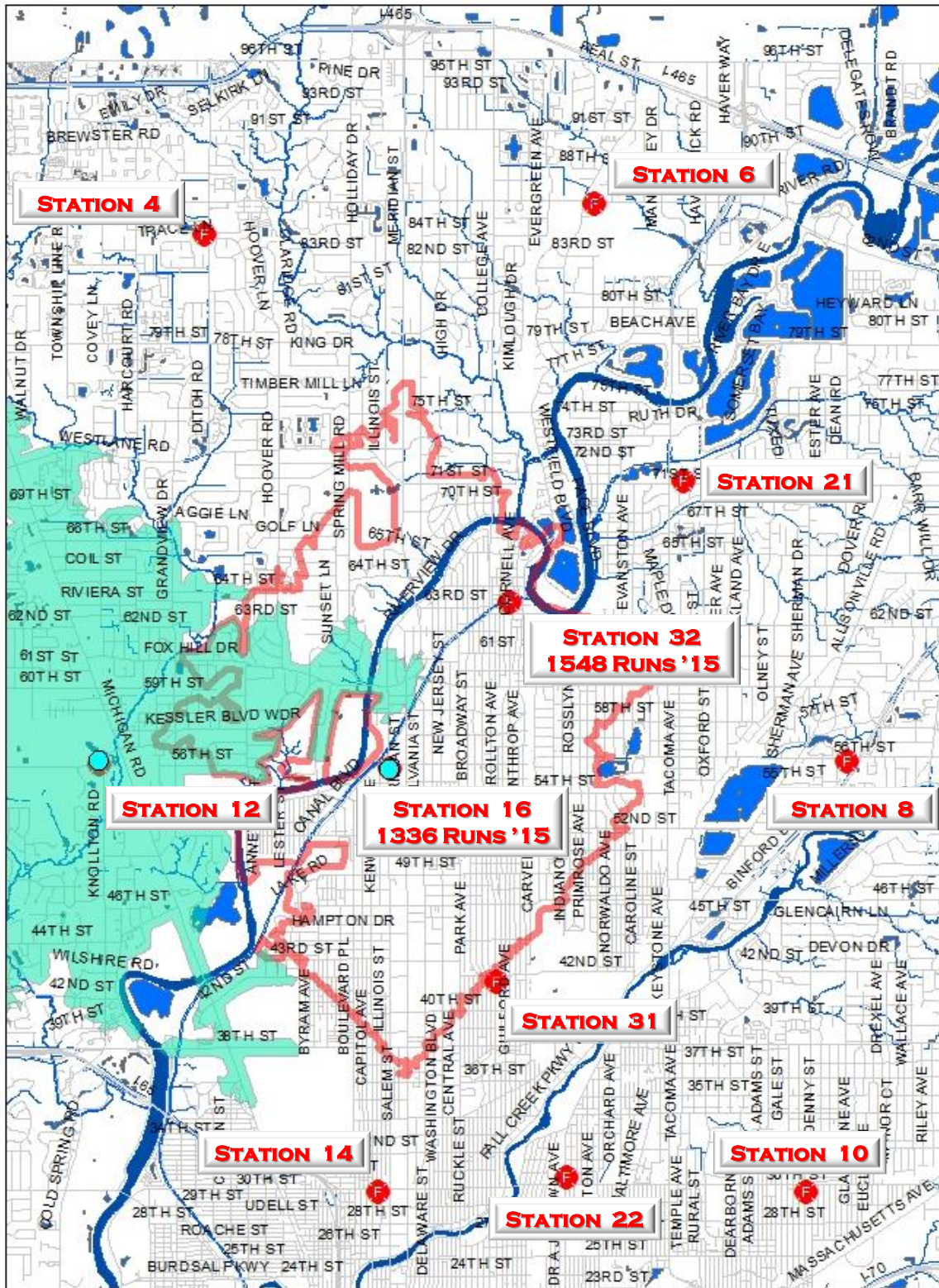
### 3. STATIONS 16 & 32



**Station 16**  
**Station 32**



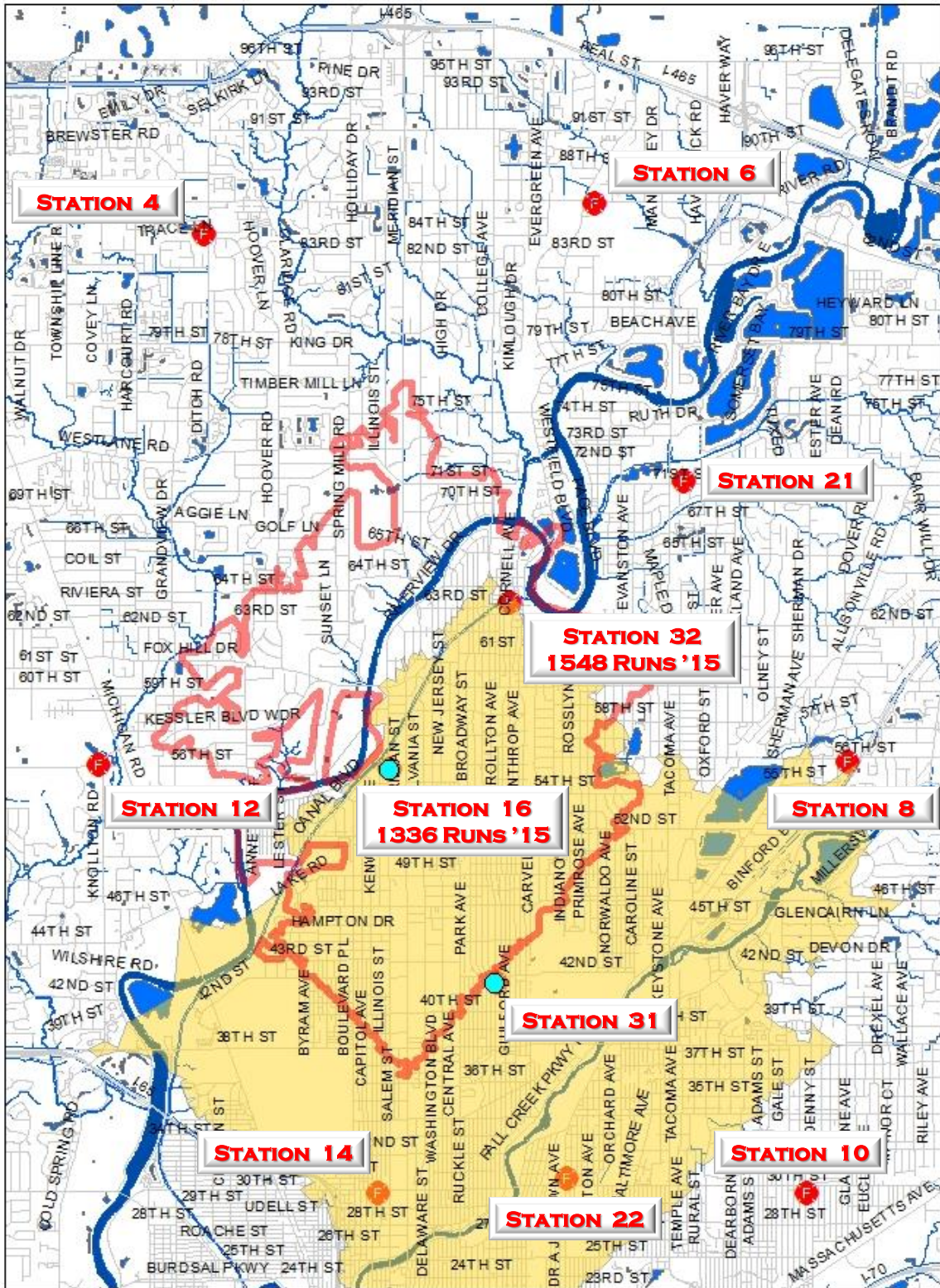
### 3. STATIONS 16 & 32



**Station 16**  
**Station 12**



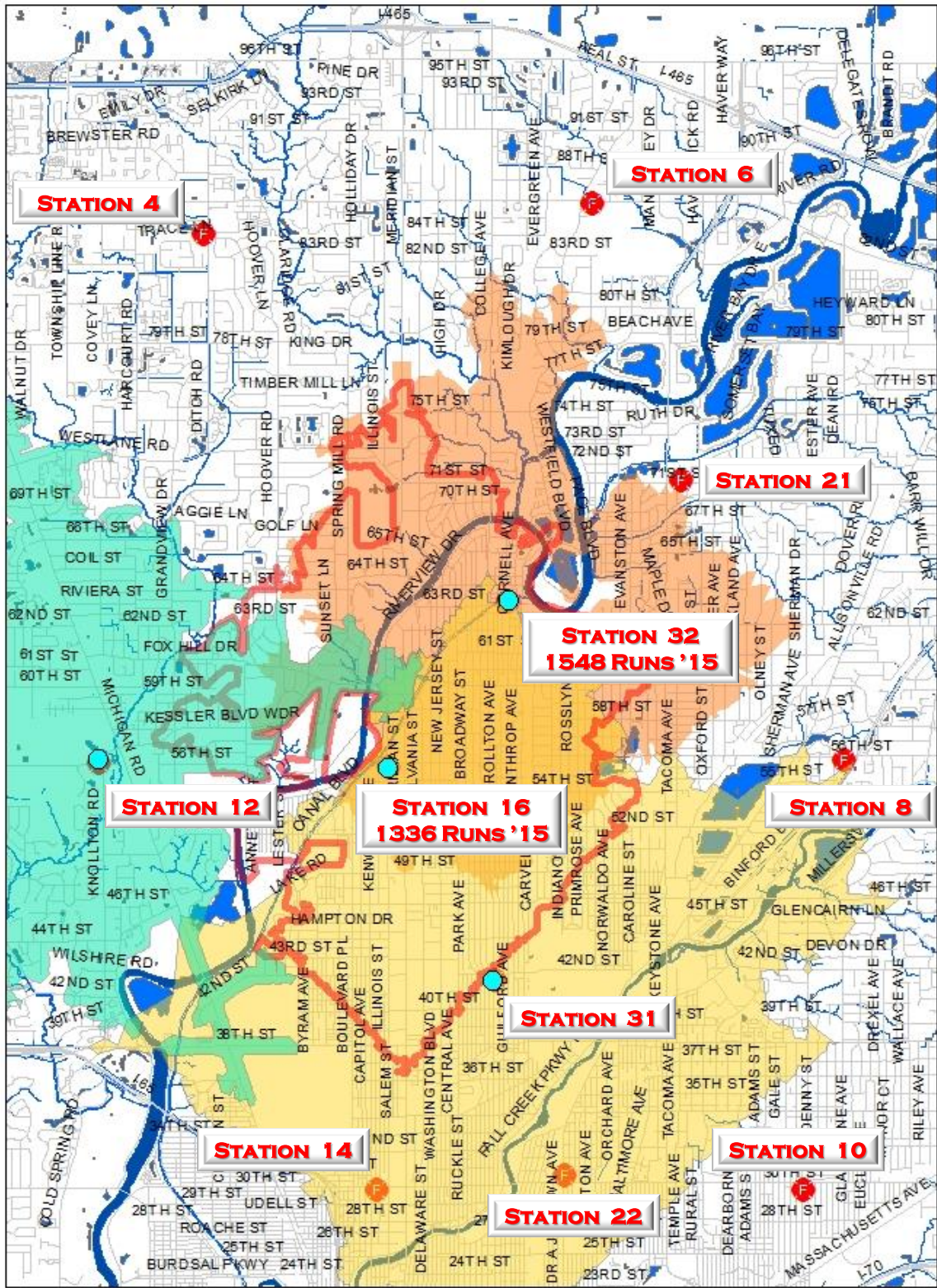
### 3. STATIONS 16 & 32



**Station 16**  
**Station 31**



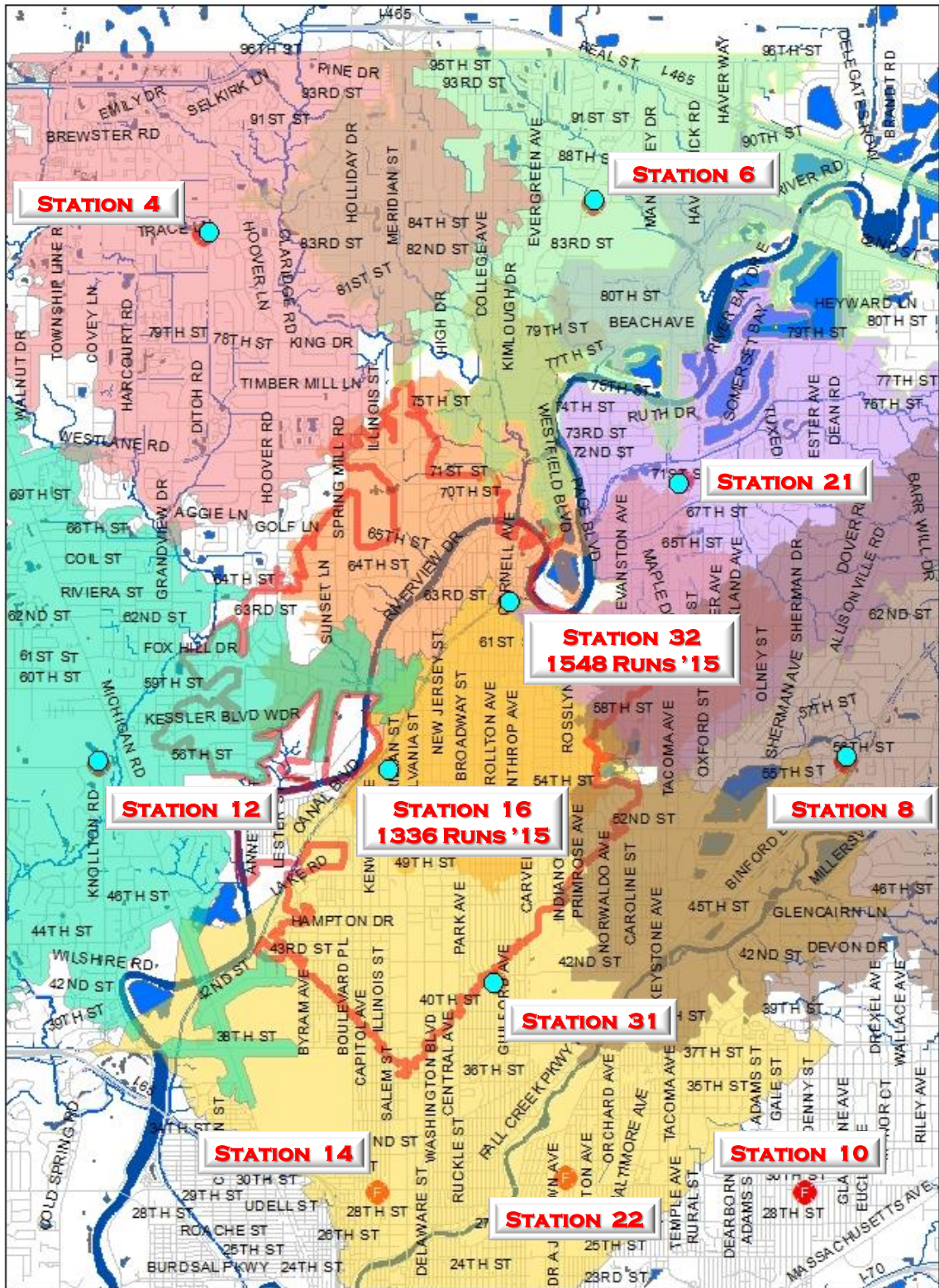
### 3. STATIONS 16 & 32



**Station 16**  
**Station 32**  
**Station 31**  
**Station 12**



### 3. STATIONS 16 & 32



**Station 16**

**Station 32**

**Station 31**

**Station 12**

**Station 4**

**Station 6**

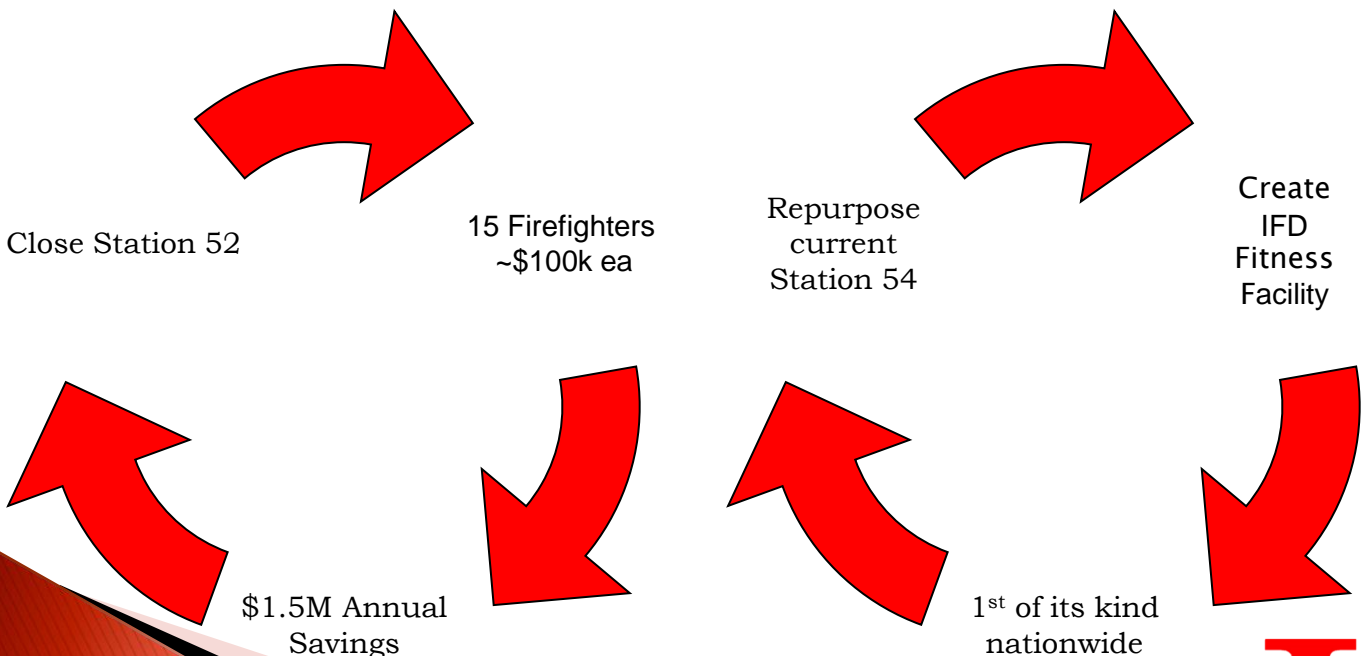
**Station 8**

**Station 21**

## 4. STATIONS 52 & 54

### A. Consolidate stations 52 & 54

- Build centralized station for \$3.2 – 3.5M, which meets the provisions of NFPA 1710
- Again, National Fire Protection Association (NFPA) 1710 states the first arriving fire apparatus will arrive on the scene within 4 minutes 90% of the time. The remaining apparatus will arrive on the scene within 8 minutes 90% of the time
- At a \$1.5M annual savings by closing Station 52, the new station will pay for itself in 2.5 years



## **4. STATIONS 52 & 54 (Cont.)**

### **A. New Station / Apparatus Objective**

- Centralized location will put us in line with our mainstream apparatus run load for optimal standards of cover
- Future Franklin Township development

### **B. IFD Fitness Facility**

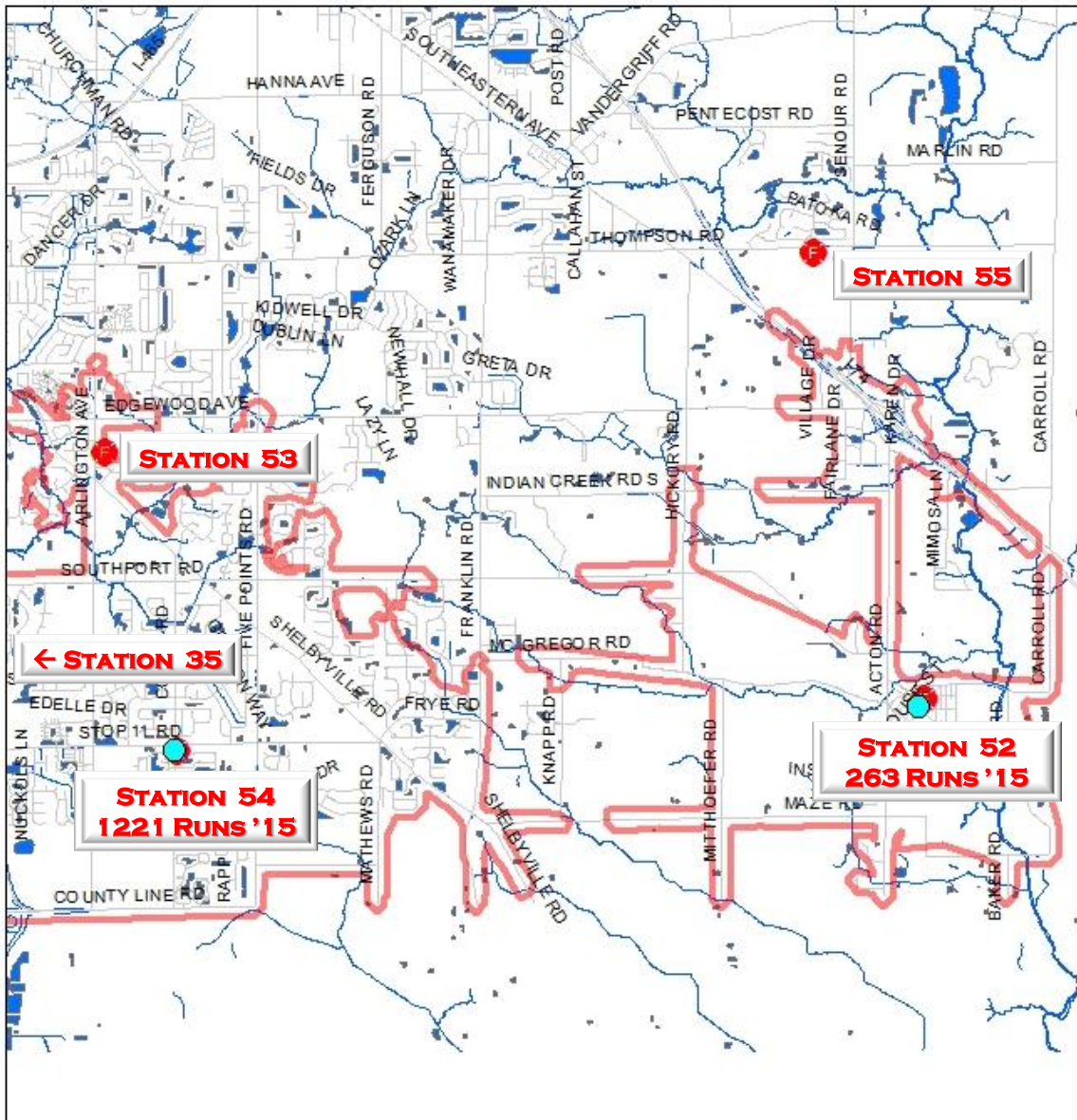
- Repurpose Station 54
- Provide members with department owned and operated WPE/CPAT facility
- Worker's Comp injury rehabilitation site
- Community Room
- Save rental of Emergency Services Education Center (ESEC) - \$40k
- Estimated renovation cost for Station 54 - \$85k

### **C. Additional Benefits**

- Sell station 52 property, recuperate \$10k annual maintenance expenses
- Closed station could be utilized for future neighborhood community center

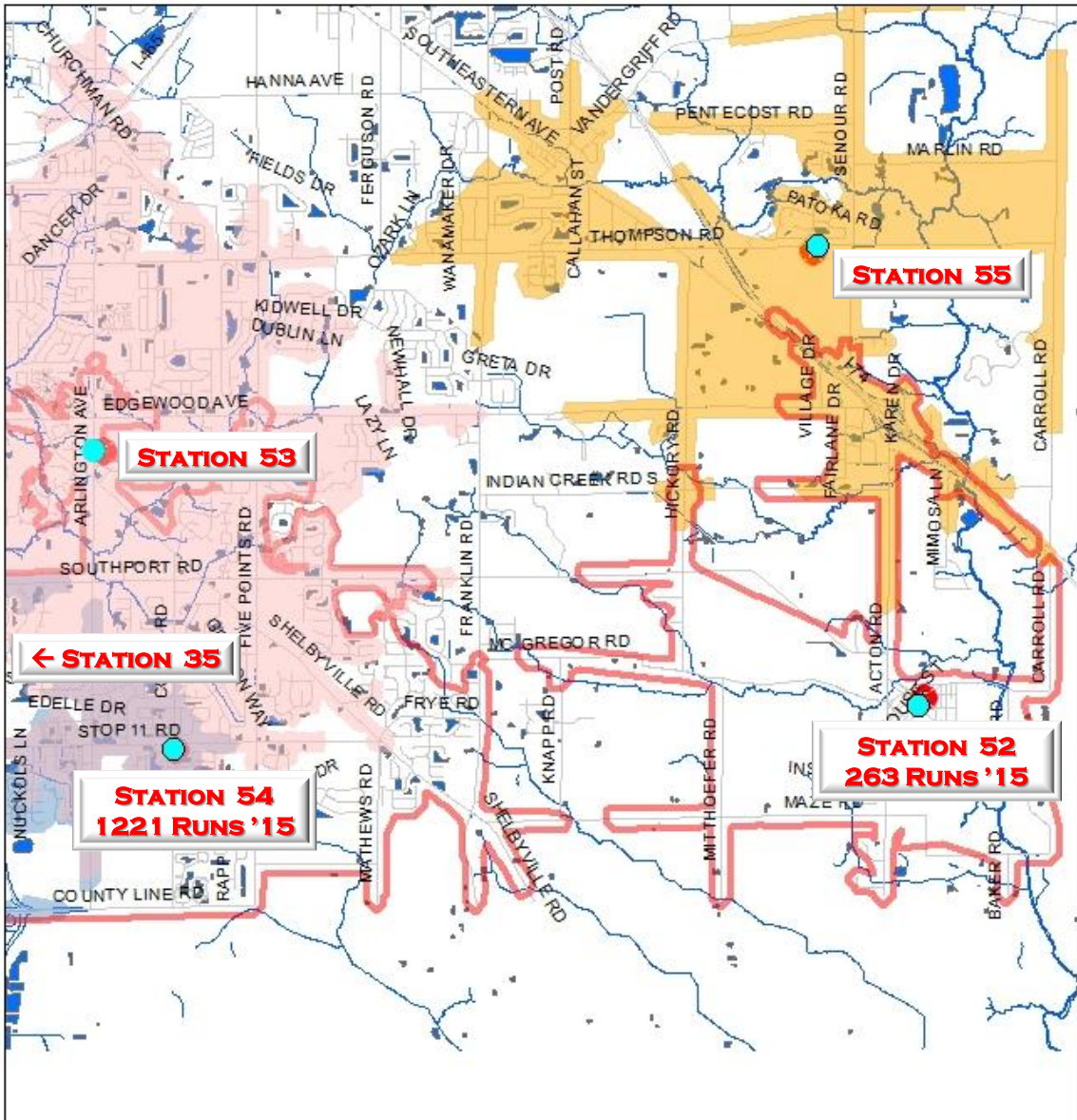


# 4. STATIONS 52 & 54



**Station 54**  
**Station 52**

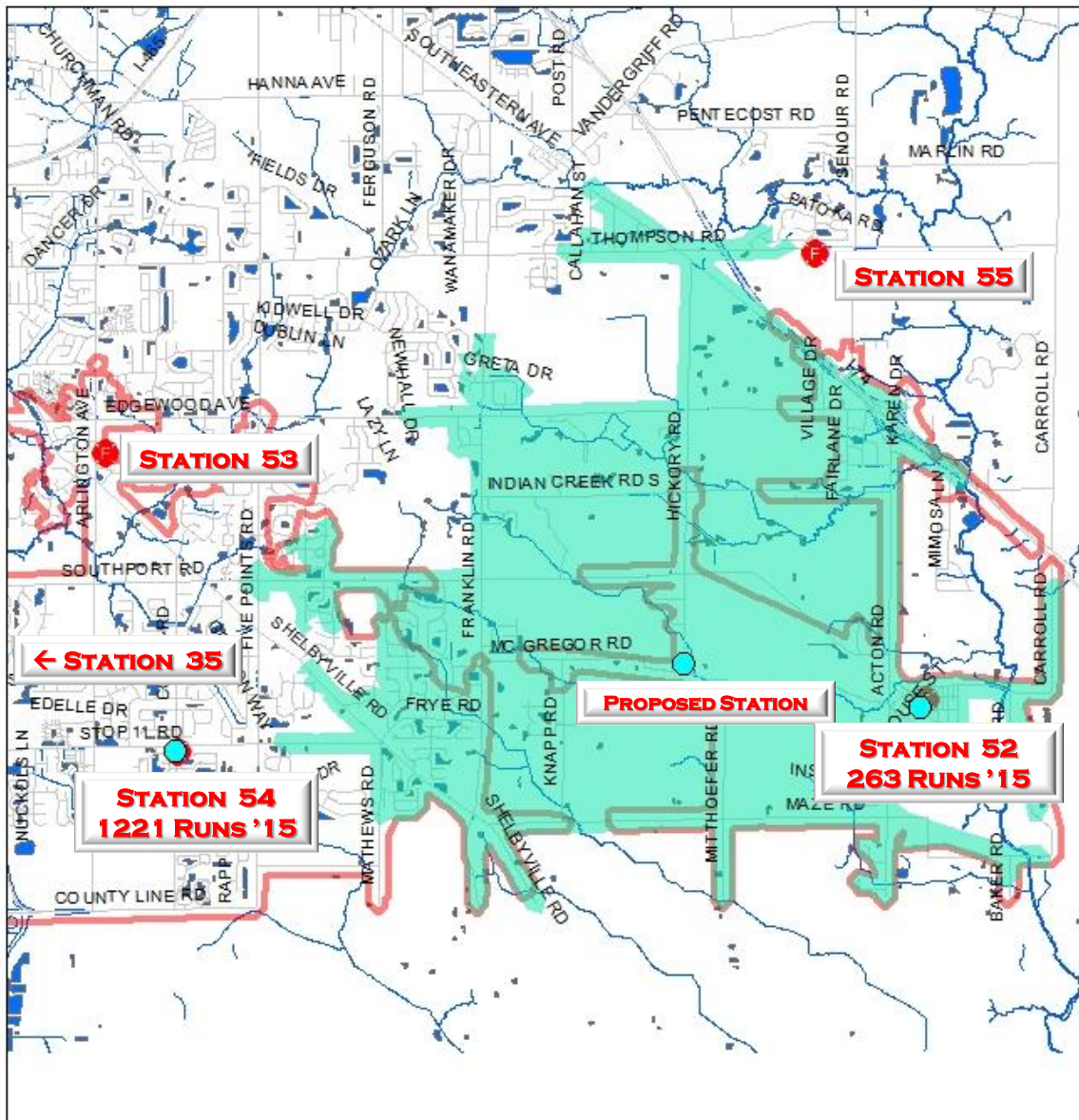
# 4. STATIONS 52 & 54



**Station 54**      **Station 35**  
**Station 52**  
**Station 53**  
**Station 55**



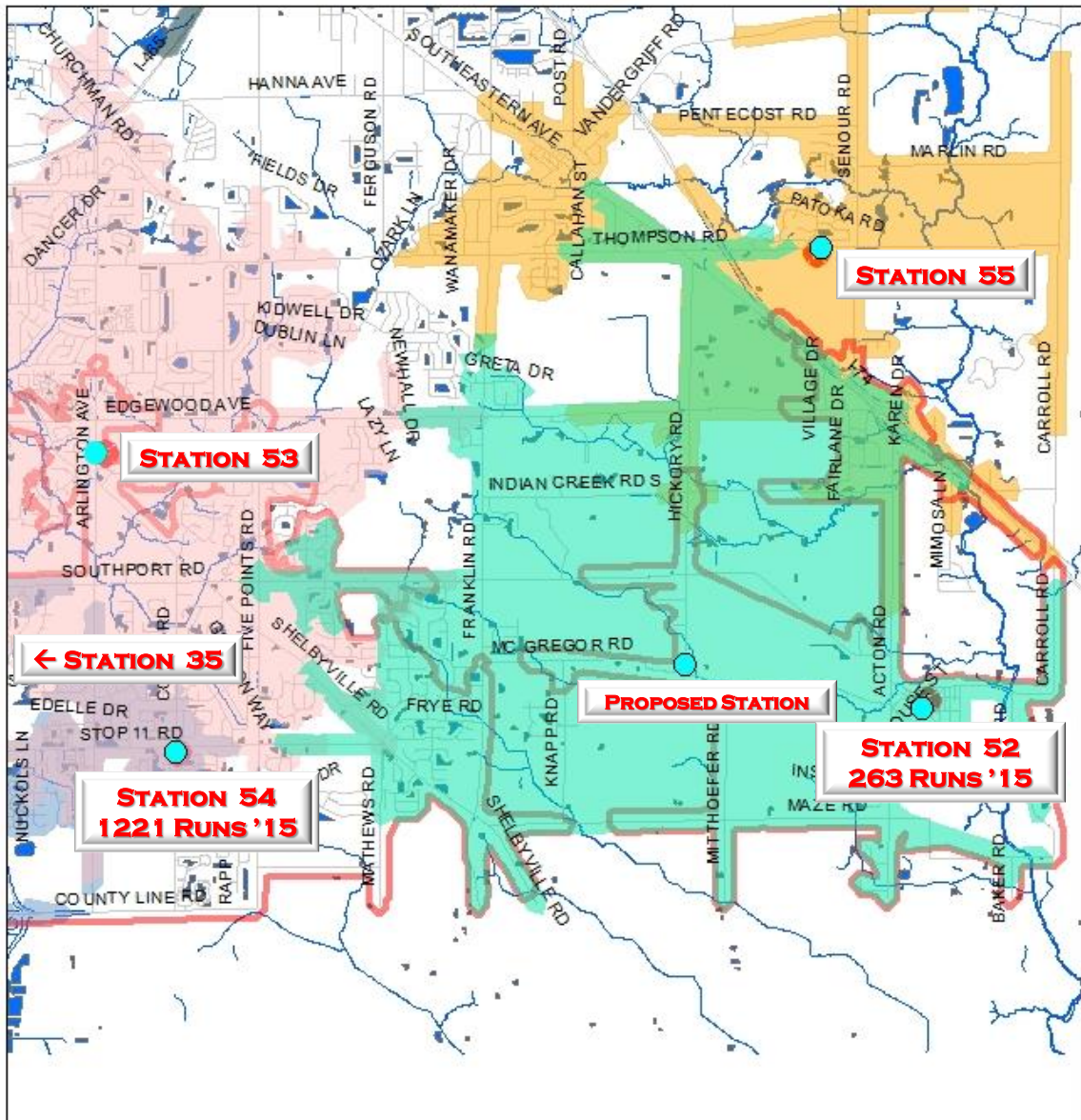
# 4. STATIONS 52 & 54



**Station 54**  
**Station 52**  
**Proposed**  
**Station**

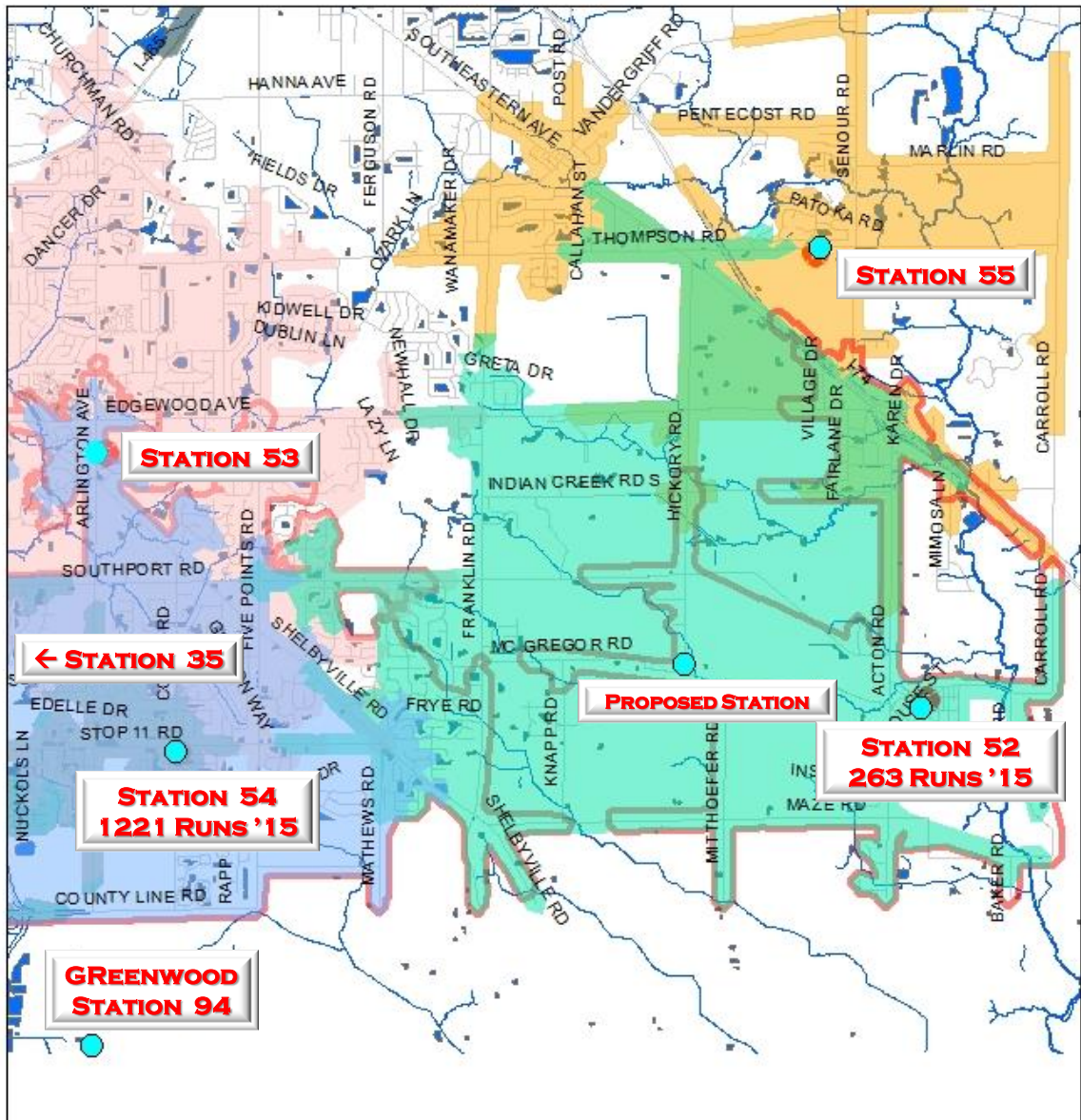


# 4. STATIONS 52 & 54



<b>Station 54</b>	<b>Station 35</b>
<b>Station 52</b>	<b>Proposed</b>
<b>Station 53</b>	<b>Station</b>
<b>Station 55</b>	

# 4. STATIONS 52 & 54



<b>Station 54</b>	<b>Station 35</b>
<b>Station 52</b>	<b>Proposed Station</b>
<b>Station 53</b>	<b>GWD 94</b>
<b>Station 55</b>	

## **SUMMARY:**

- 1. HEADQUARTERS**
- 2. BATTALION 3 QUARTERS**
- 3. STATIONS 16 & 32**
- 4. STATIONS 52 & 54**
- 5. REPURPOSE STA. 54 - IFD FITNESS CENTER**

## **QUESTIONS :**



**THANK YOU**

**FID**